

workstories...

ASSEMBLY' GUIDE

STORAGE — URBAN CONNECT

workstories

Urban Connect

Tools required



Pencil



Drill



Spirit level

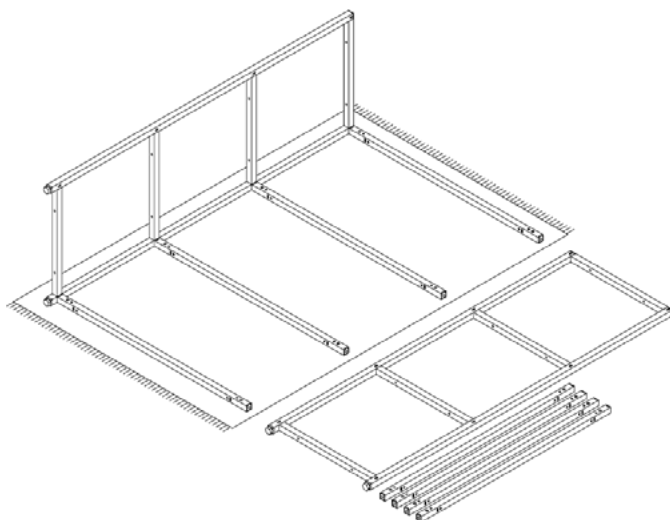


Screwdriver



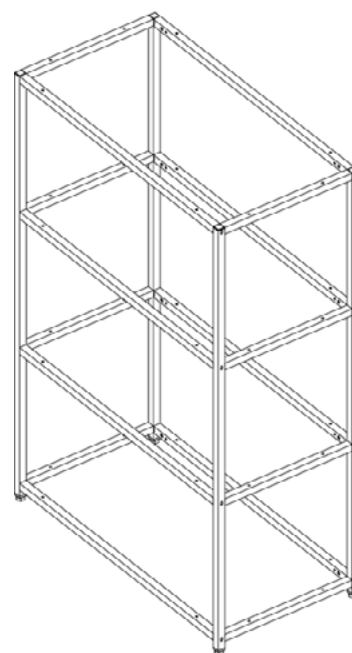
Screwdriver

Where possible we recommend building the framework for your system with the product laid on the floor. Ideally on a soft surface. This makes managing the separate parts considerably easier.



Stand

Upright

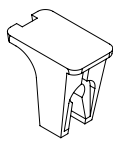


Once you have a stable structure, generally consisting of two or more ladders, the product can be stood upright and added to sequentially.

Urban Connect

Part identification - Hardware

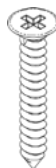
See fittings kit list for quantities



Pin Clip



Rawl Plug



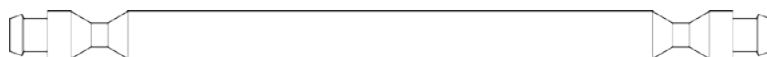
1 1/4"
Wood screw



M6x10mm
Bolt



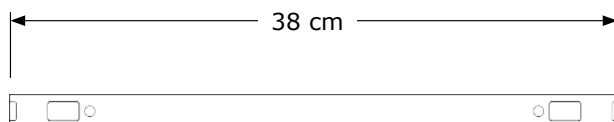
End Pin (Scale 1:1)
SH-PIN-END



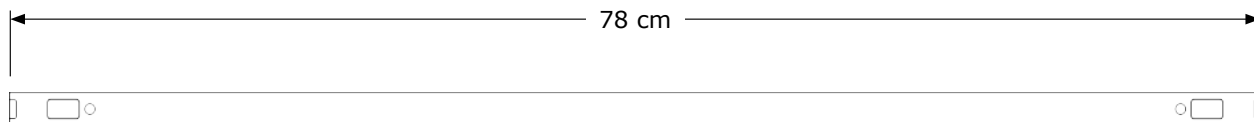
Inter Pin (Scale 1:1)
SH-PIN-END

Part identification - Framework

Cross rails



Cross Rail 400
TT-2-RAIL-04

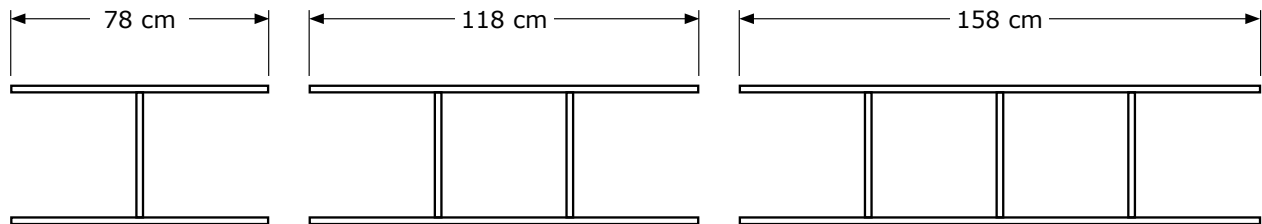


Cross Rail 800
TT-2-RAIL-08

Urban Connect

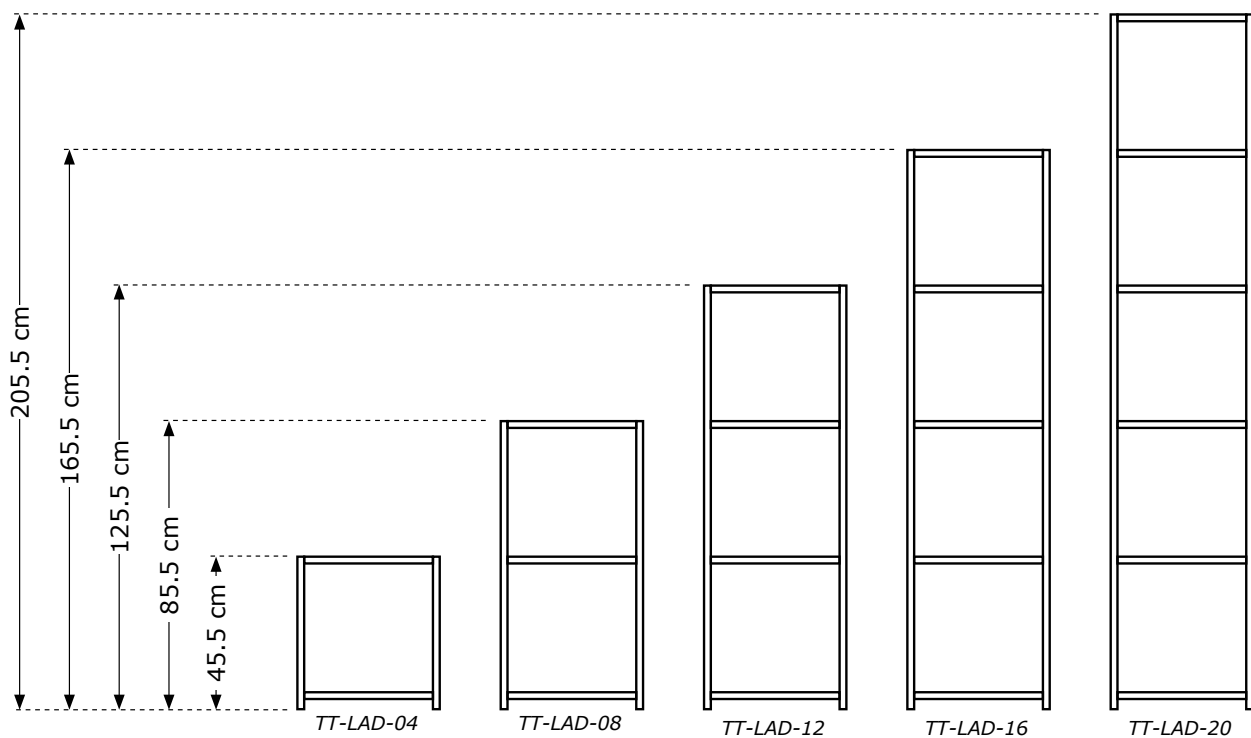
Part identification - Framework

Bridging Ladders



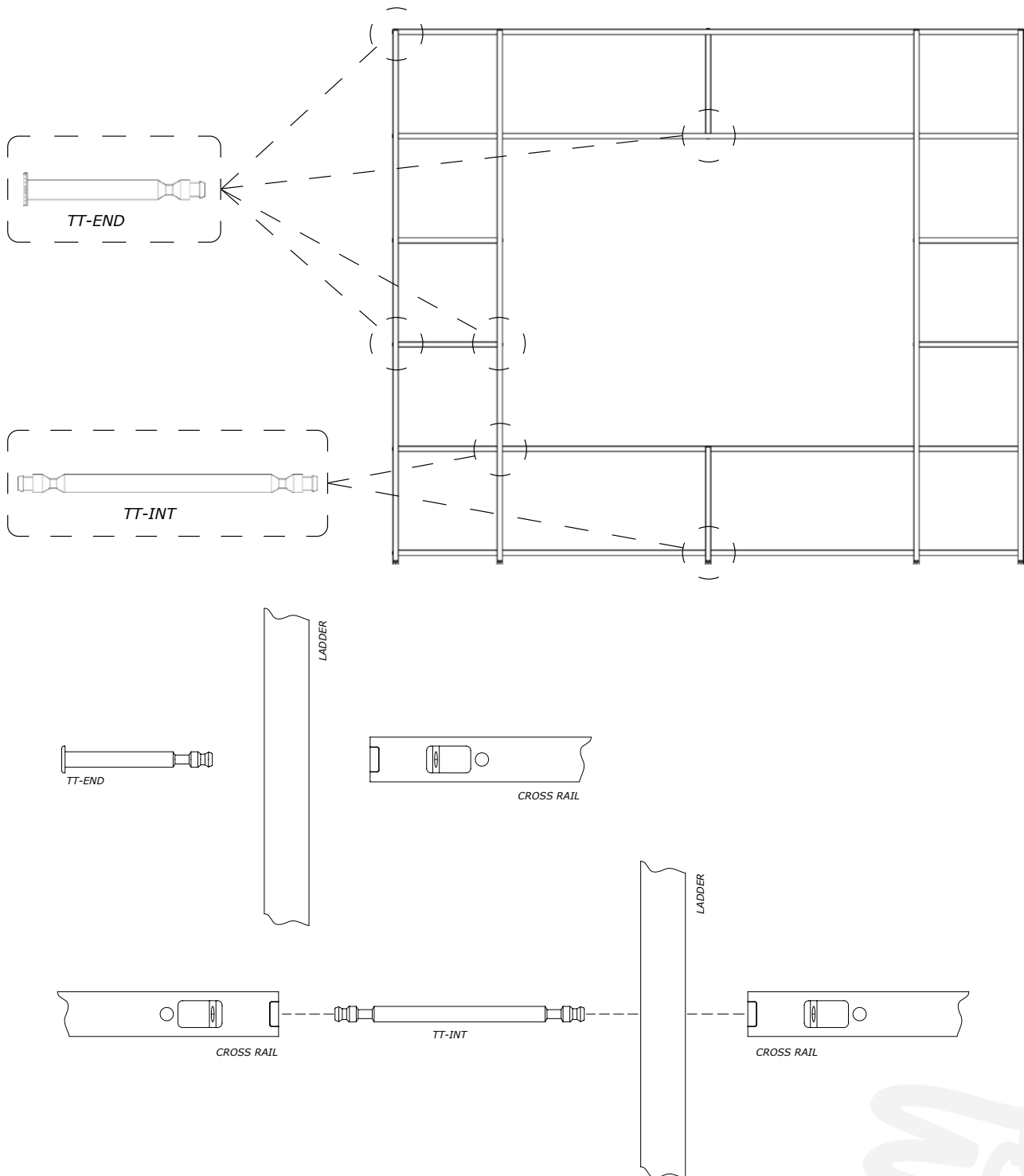
Part identification - Framework

Ladders



Urban Connect

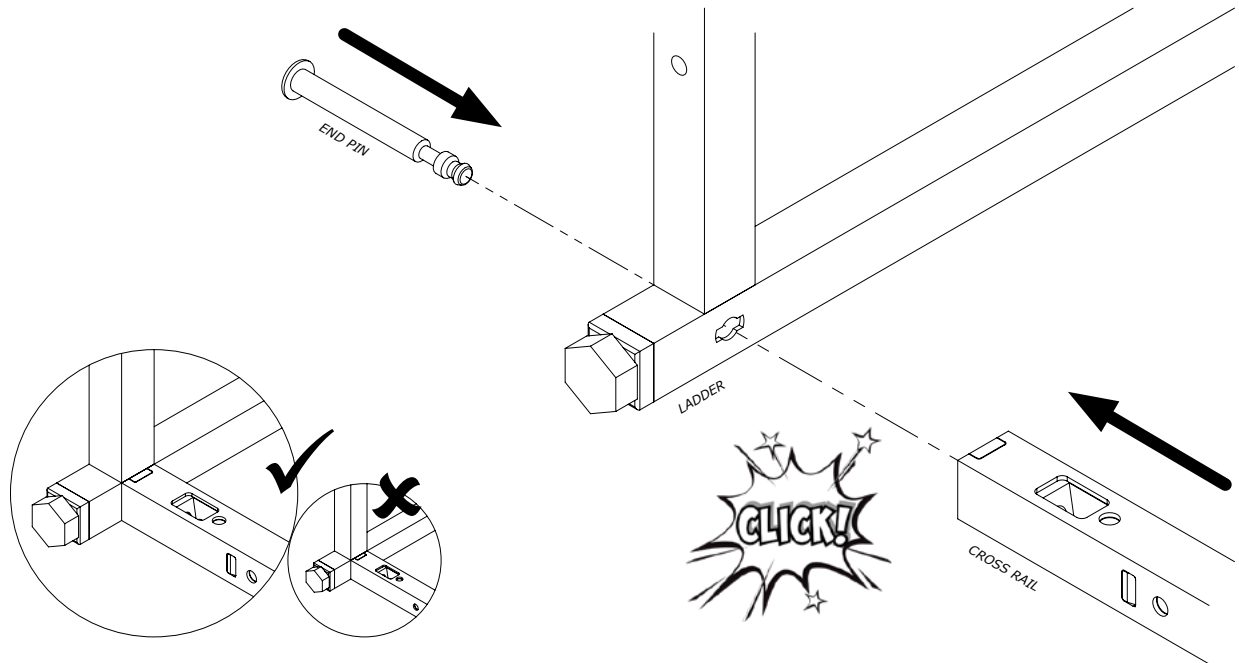
Pin locations



- End pins (TT-END) are used to connect a cross rail to a ladder or bridging ladder. They are used to both start and terminate runs of rails.
- Intermediate pins (TT-INT) are used to connect cross rails either side of a ladder. They are used within continuous runs of cross rails.

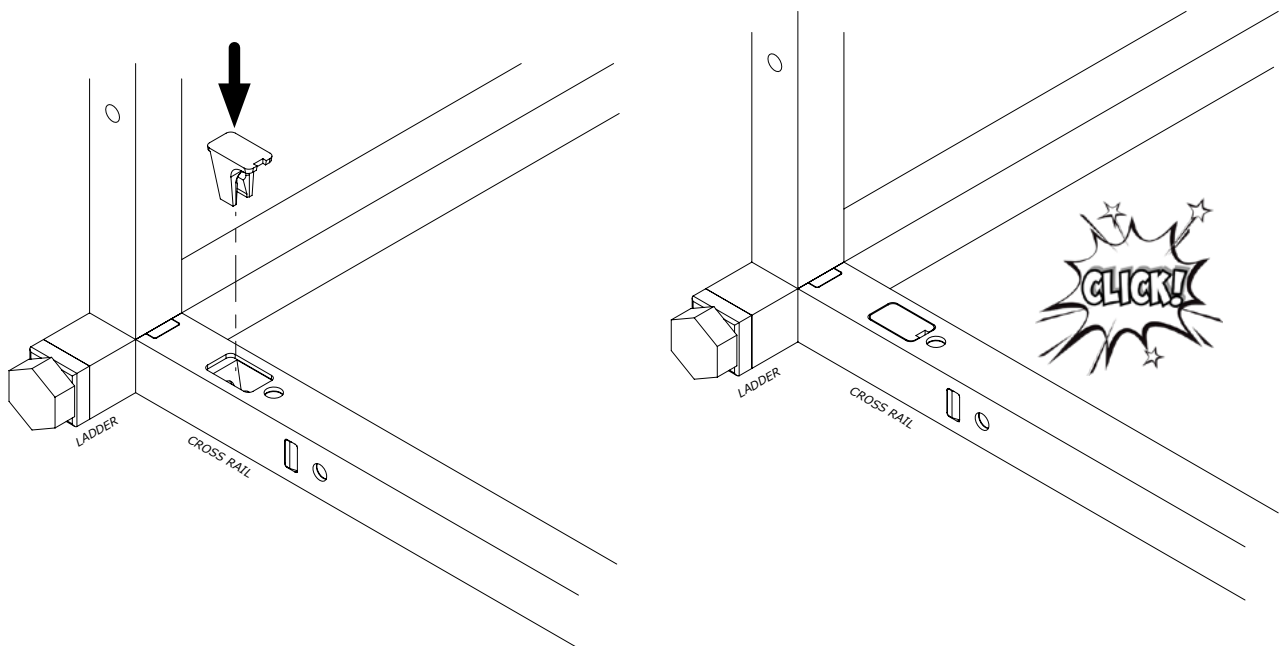
Urban Connect

End pins



CHECK RAIL ORIENTATION

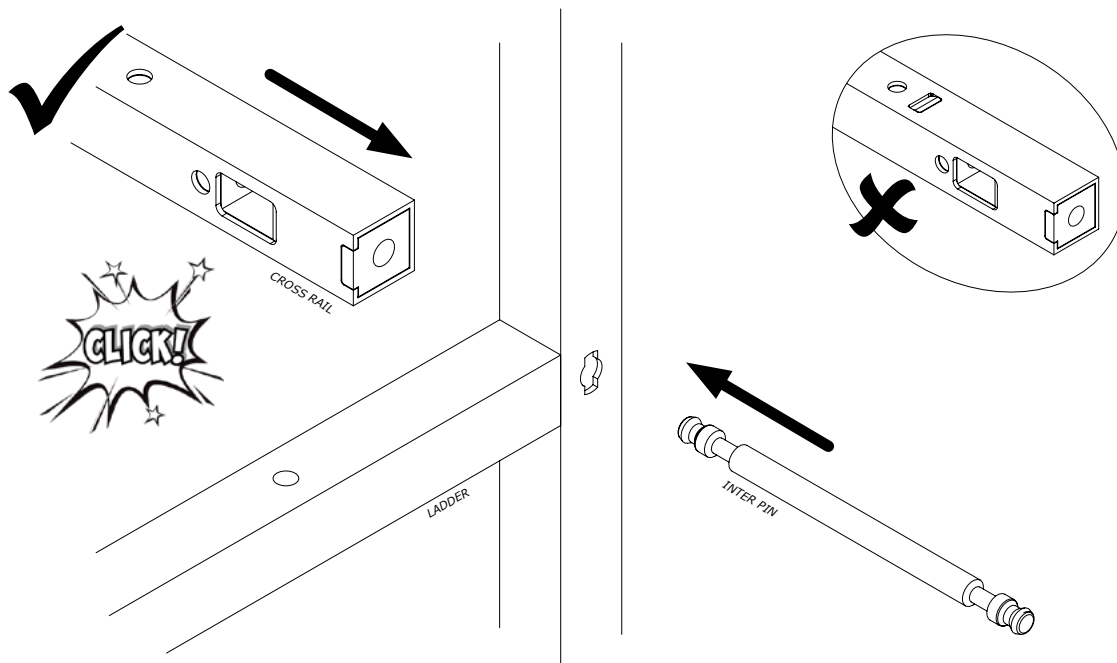
- Refer to configuration drawing for rail placement
- Push TT-PIN through the hole in the ladder and into corresponding cross rail until you hear/feel a 'CLICK'.



- Push the Pin Clip into the hole in the cross rail and click.
- Repeat as necessary for additional rails and end pins.

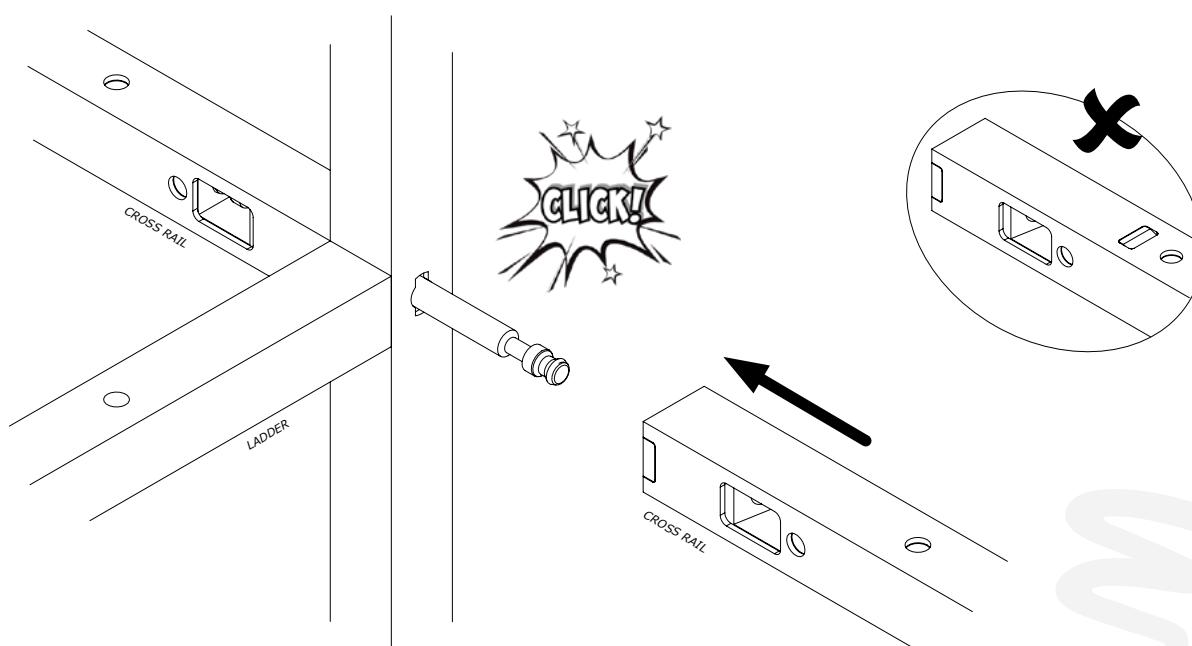
Urban Connect

Intermediate pins



CHECK RAIL ORIENTATION

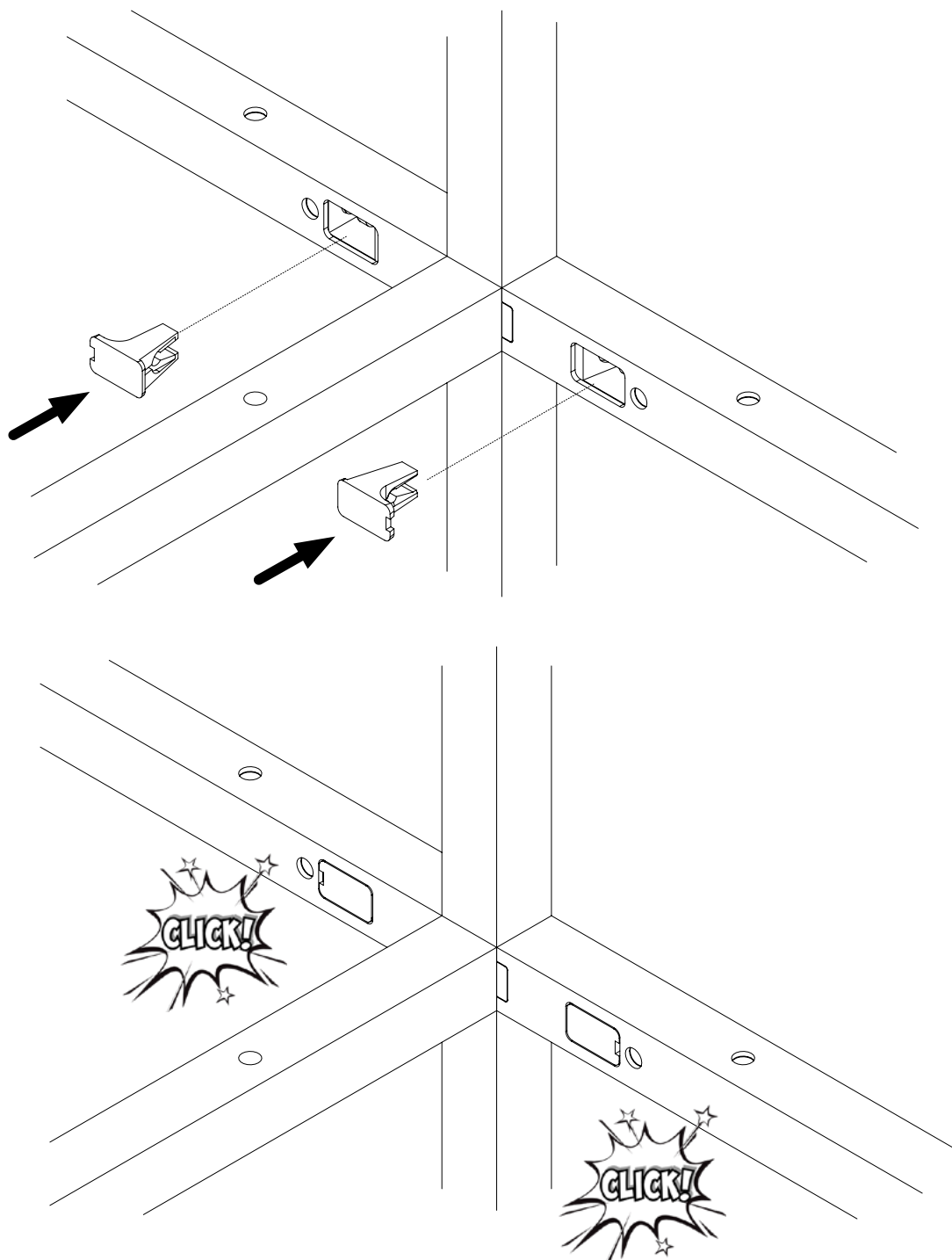
- Refer to configuration drawing for rail placement
- Push TT-INT through the hole in the ladder and into corresponding cross rail until you hear/feel a 'CLICK'.



CHECK RAIL ORIENTATION

- Refer to configuration drawing for rail placement
- Push adjoining cross rail onto SH-PIN-INT until you hear/feel a 'CLICK'.

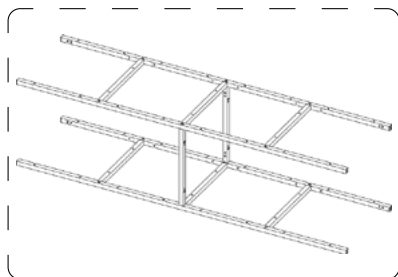
Urban Connect



- Push the pin clip into the hole, please note the orientation of the pin clip.
- Repeat as necessary for additional rails and intermediate pins.

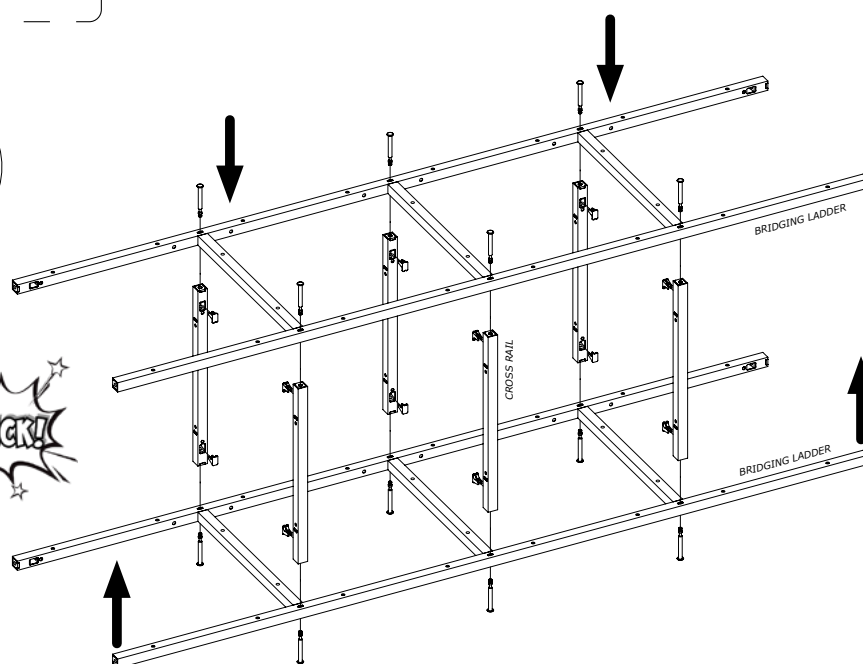
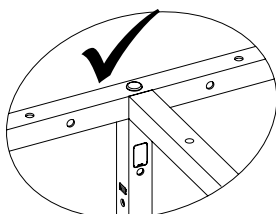
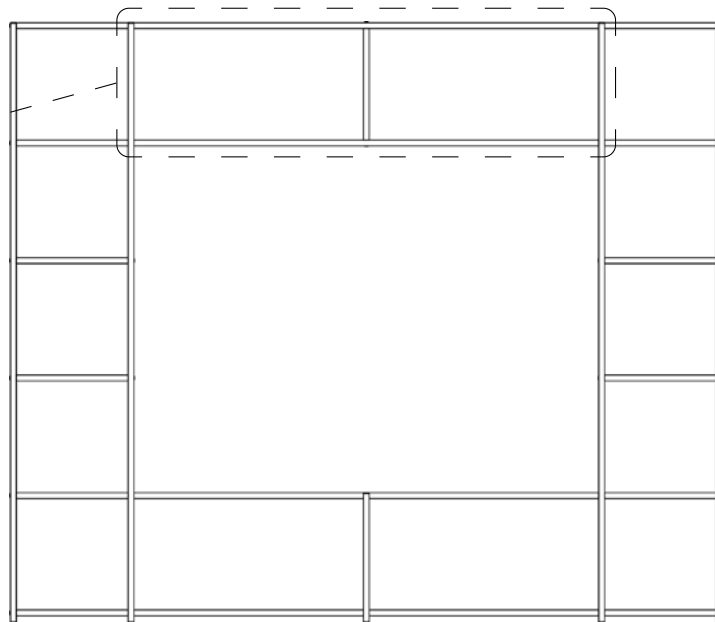
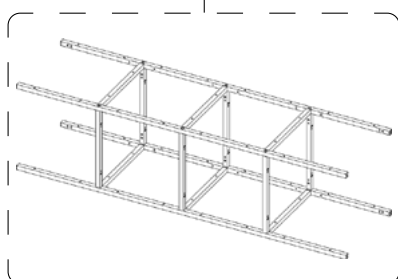
Urban Connect

Bridging ladders



Refer to configuration drawing for bridging ladder and rail configuration.

Build supporting framework first!

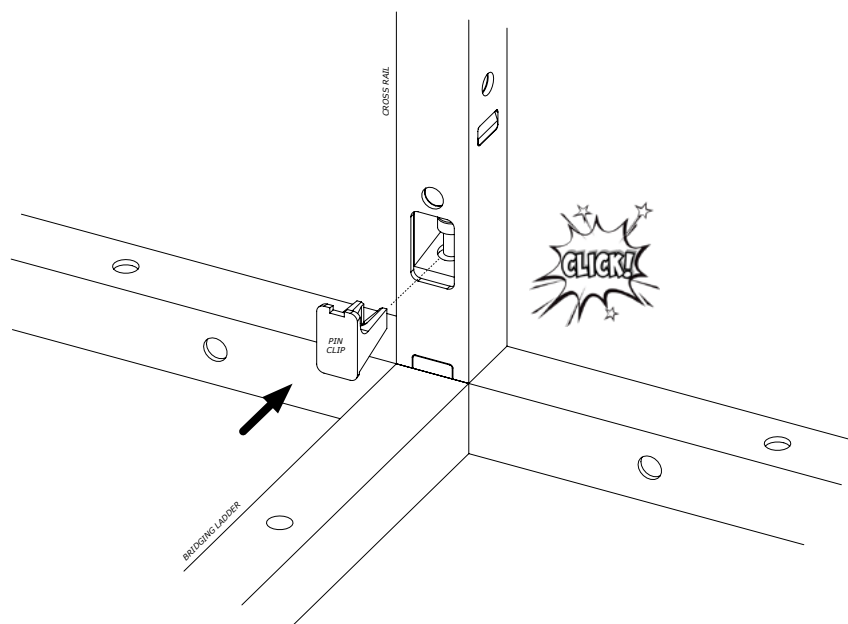


- Sub-assemble bridging ladder and cross rail assembly. Cross rails are used vertically.

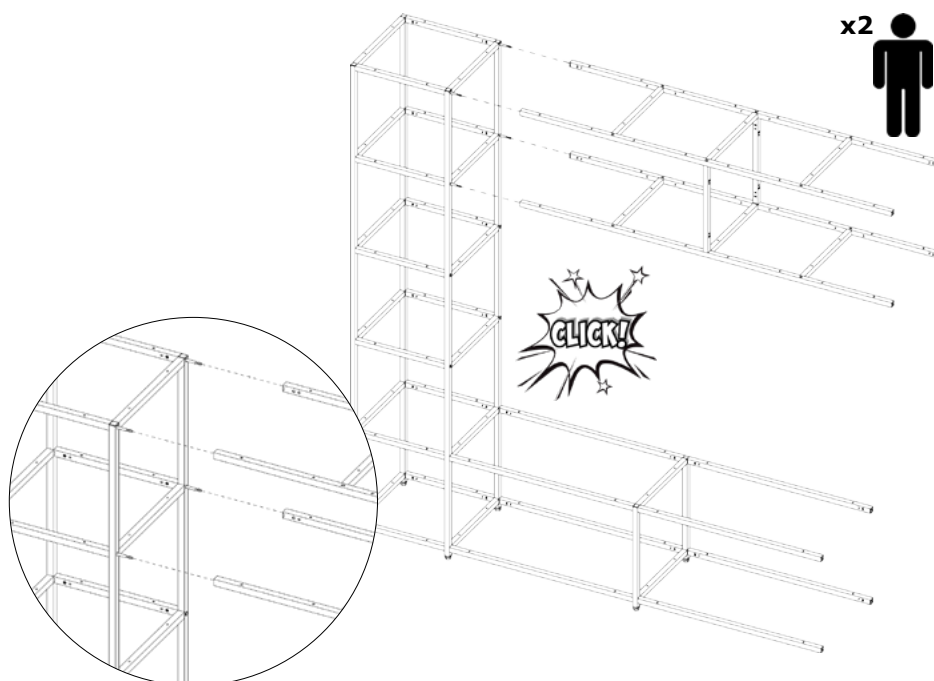
CHECK RAIL ORIENTATION

- Push SH-PIN-END through the hole in the ladder and into corresponding cross rail until you hear/feel a 'CLICK' then insert the pin clip until you hear/feel a 'CLICK'
- Repeat for additional rails.

Urban Connect

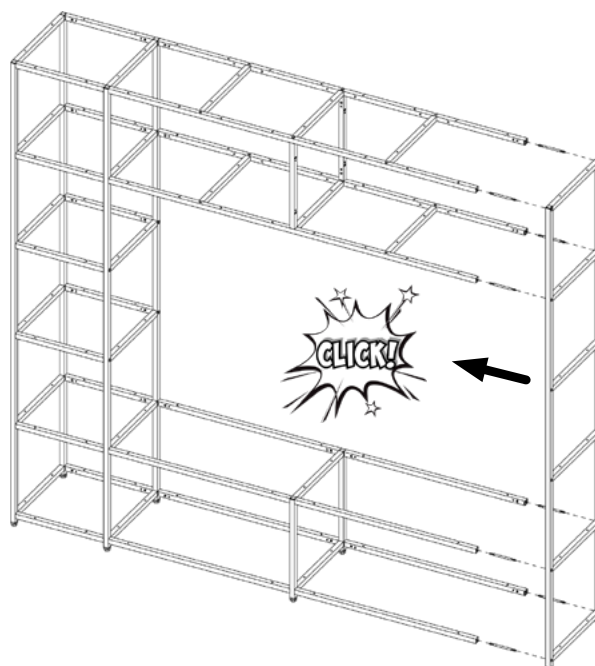


- Push the pin clip into the hole until you hear/feel a 'CLICK'.
- Repeat as necessary for additional rails and pins.

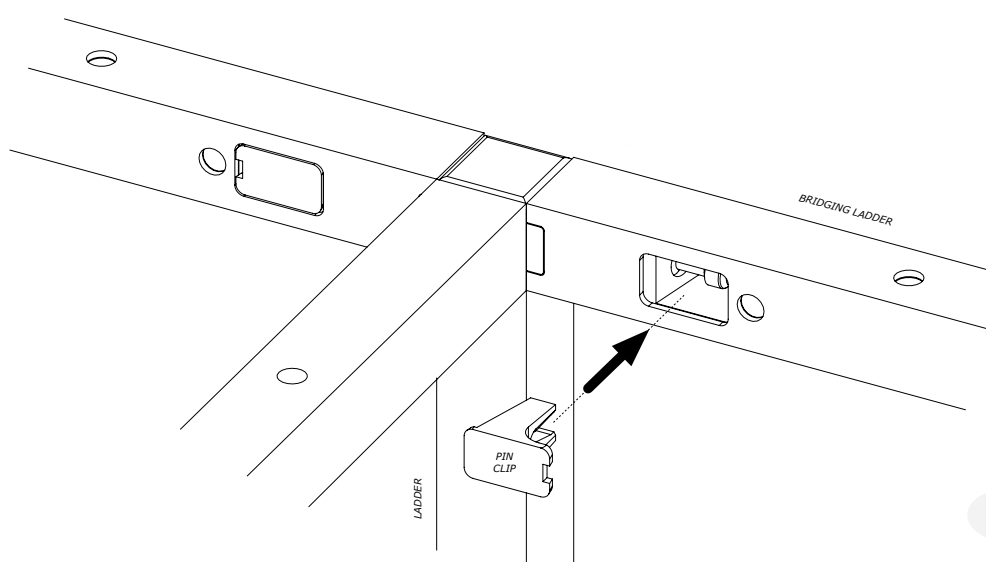


- If space allows this step should be performed with the framework lying on the floor.
- Grab a friend!
- Line up the ladders of the pre-assembled bridging ladder with the protruding Intermediate Pins (TT-INT).
- Push assembly onto pins until you hear/feel a 'CLICK'.

Urban Connect



- Position the next ladder in place
- this must be the same height or higher than the ladder already attached to the bridging ladder.
- Push the required pins (which pin to use is dependant on your specific configuration) through the holes in the ladder and into corresponding bridging ladder or rail until you hear/feel a 'CLICK'.
- Repeat as required, this will support the bridging ladder temporarily whilst you continue with the build.



- Press the pin clip into the hole until you hear/feel an 'CLICK'.
- The cross rails and TT-INT will be pulled together to create a rigid, stable joint around the ladder.
- Repeat as necessary for additional pin positions.
- Continue with the rest of the build as required.

Urban Connect

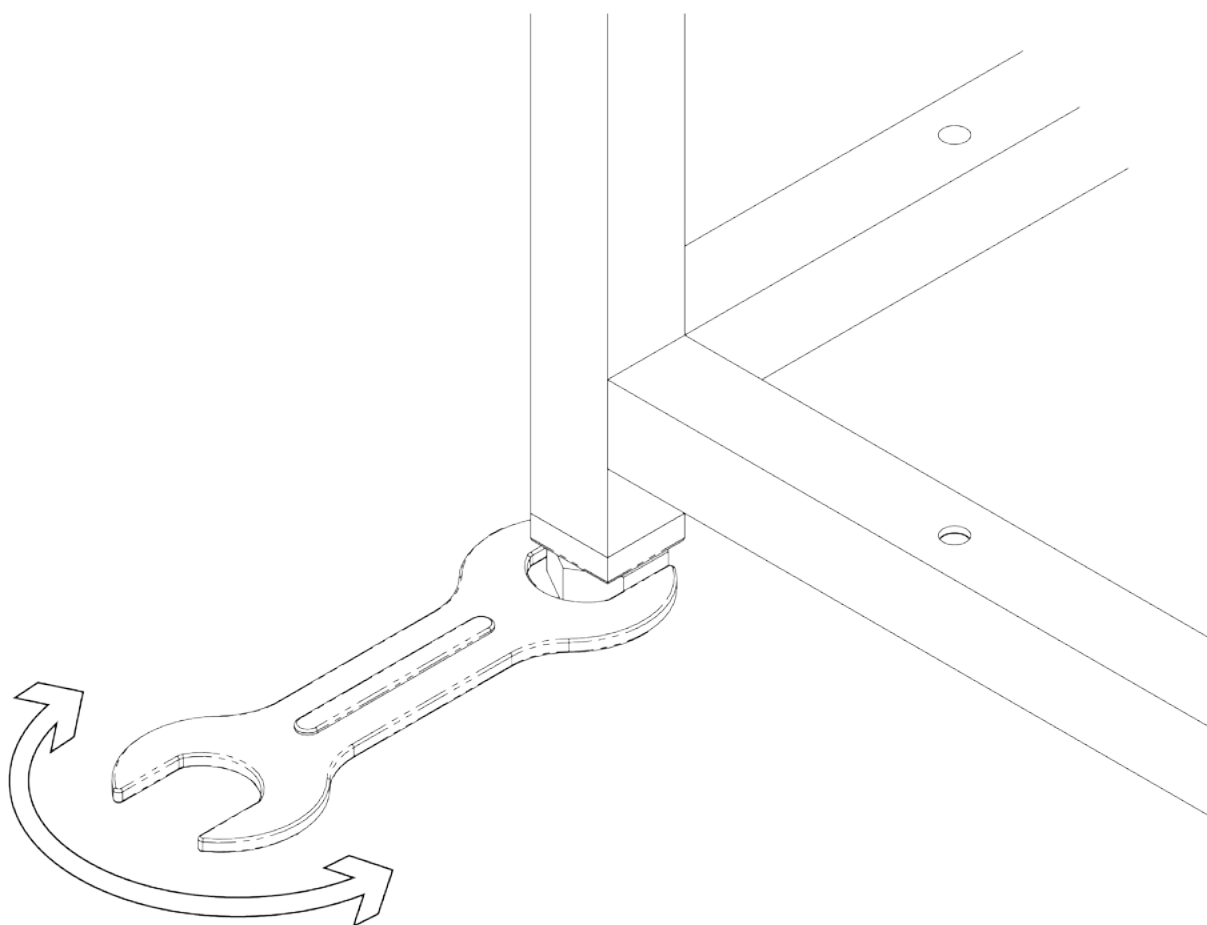
Tools required



Spirit level



Screwdriver



- Position unit as required.
- Level using the adjustable feet in the end ladders and a spanner.

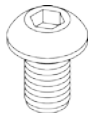
Urban Connect

Wall fixing

Tools required



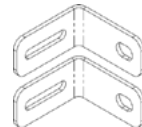
Pencil



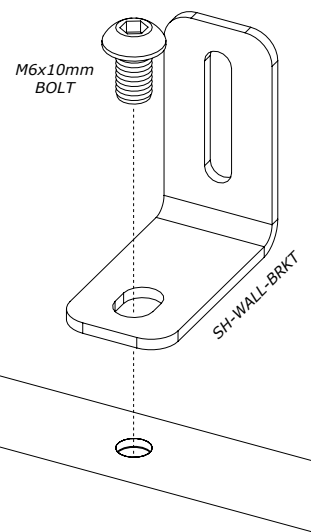
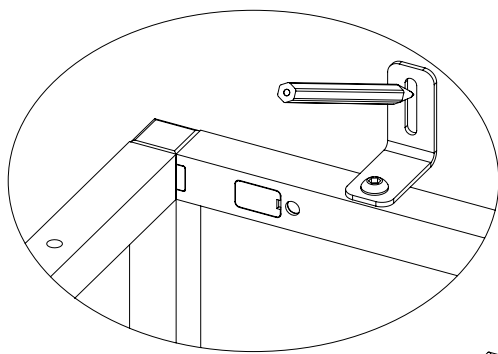
M6x10mm
Bolt



4mm
Allen key



Wall brackets
TT-WALL-BRKT



- Attach wall fixing brackets to frame with M6x10mm Bolts.
- These should be installed as high as possible on the unit. Mark the wall positions using the brackets as a guide.
- The slot allows some vertical variance in the final hole position and allows additional levelling if required.

Urban Connect

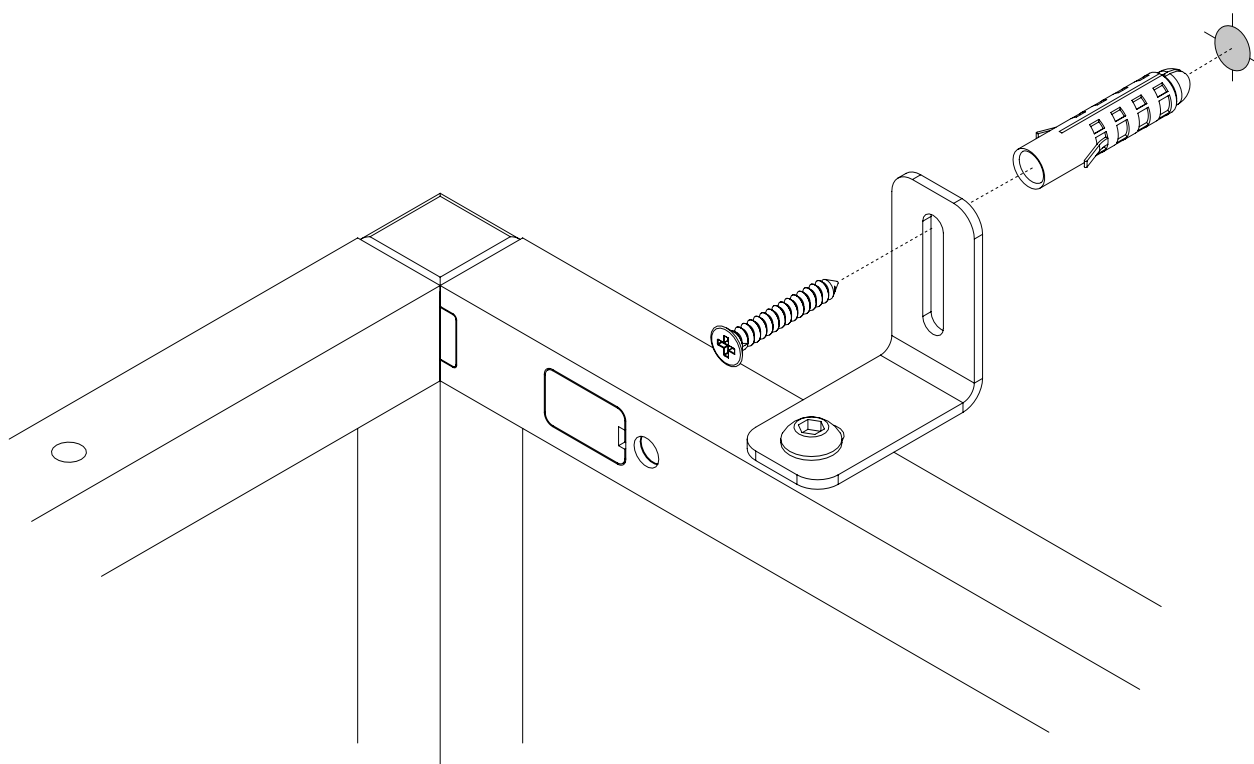
Tools required



Screwdriver



Drill



- Slacken bracket and rotate out of way.
- Drill the hole positions and insert suitable wall fixing.
- Secure unit to the wall.
- Ensure wall fixings suitable for the make up of the wall are used.
- PLEASE NOTE: THIS MAY NOT BE THOSE PROVIDED WITH THE BRACKETS
- Workstories accepts no responsibility for any damage caused by wall fixing furniture.



SHOWROOM

—
Parchment House
13 Northburgh Street
London EC1V 0JP

CONTACT

—
info@workstories.com
+44 (0)20 3735 5224
workstories.com