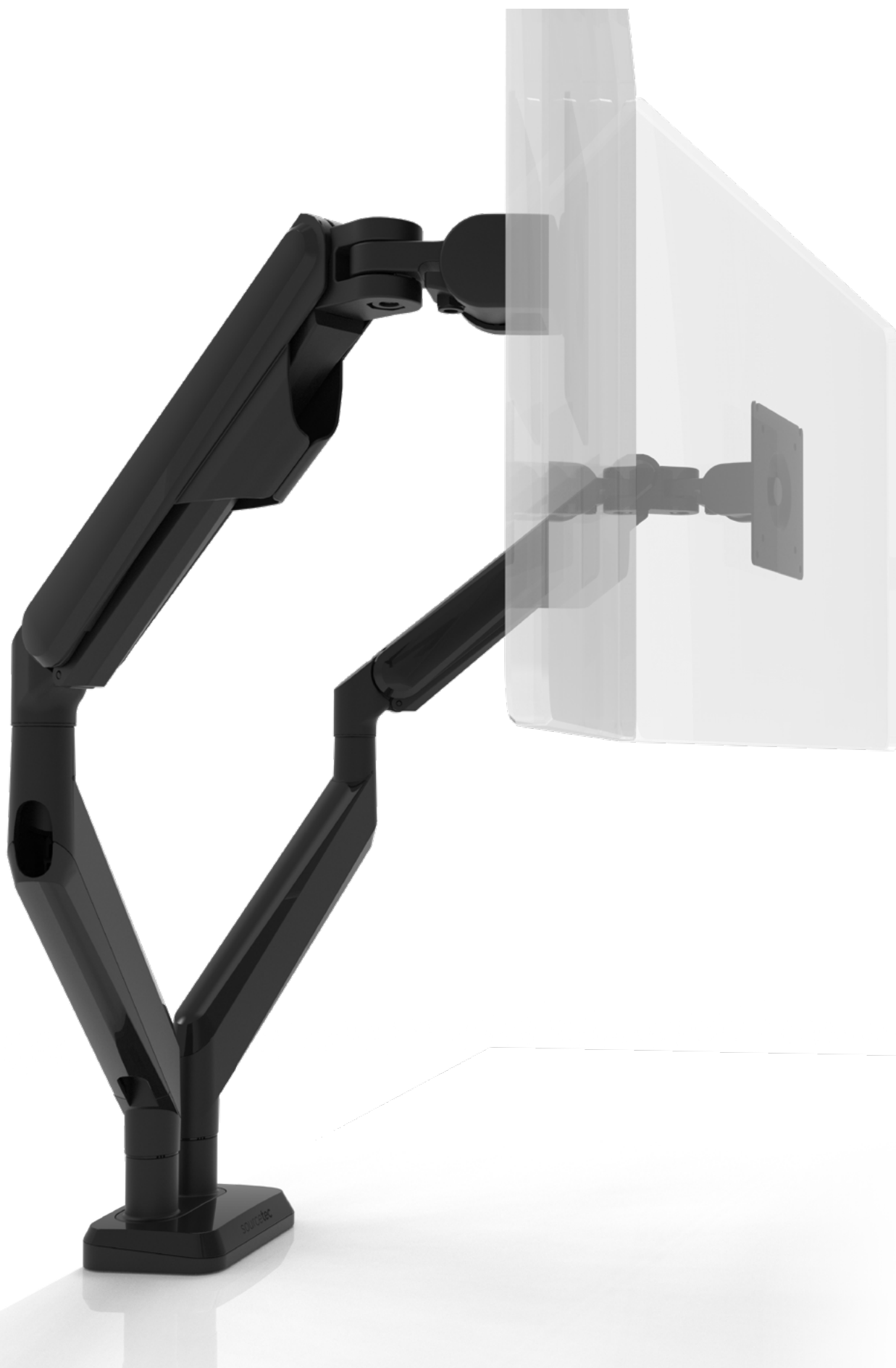


# MOVE DOUBLE

Installation guide



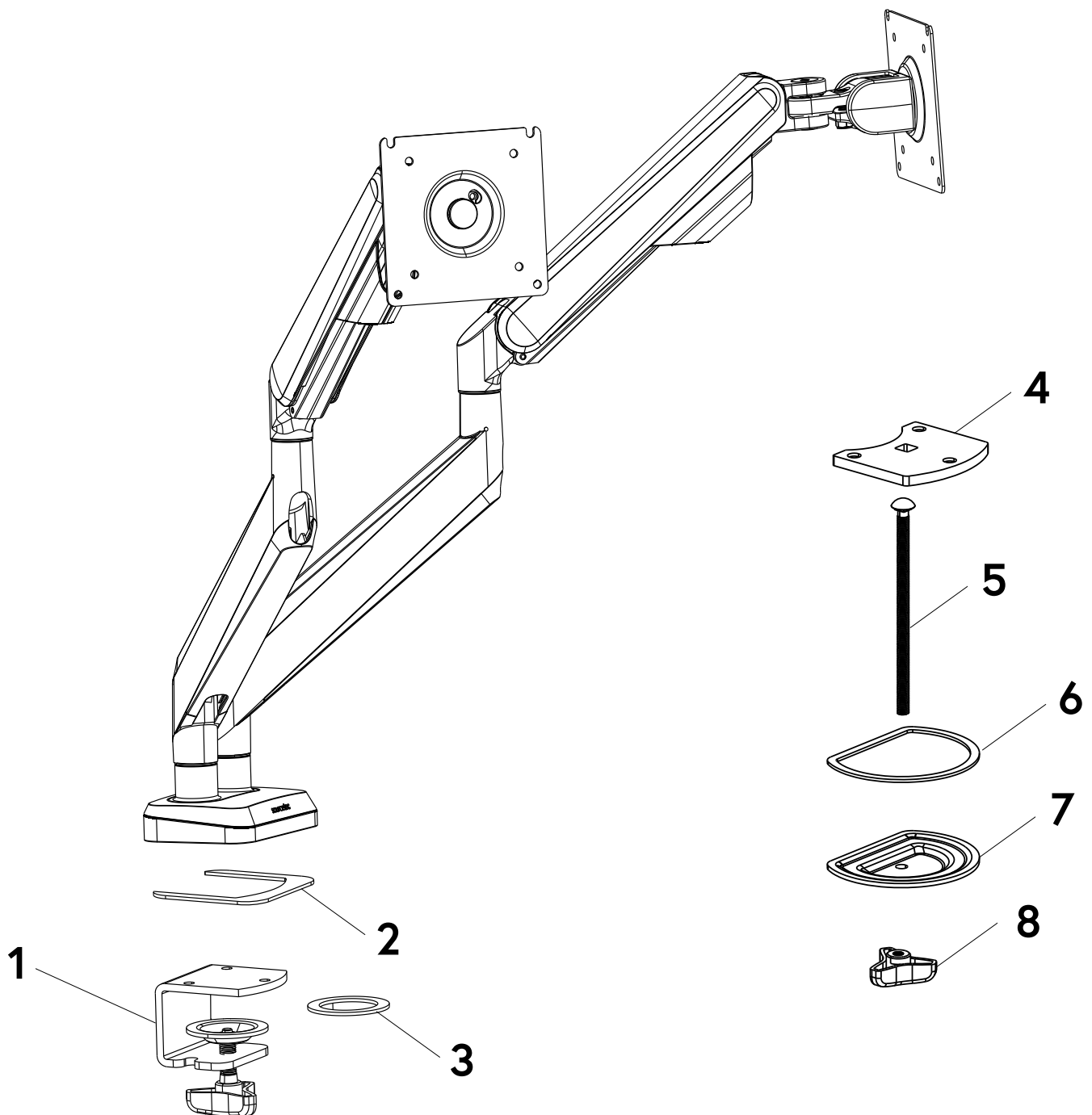
sourcecotec.global

**sourcecotec**

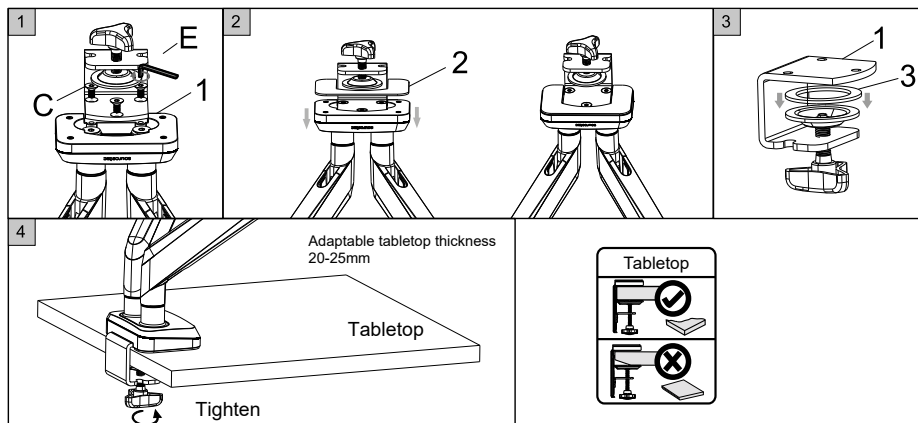
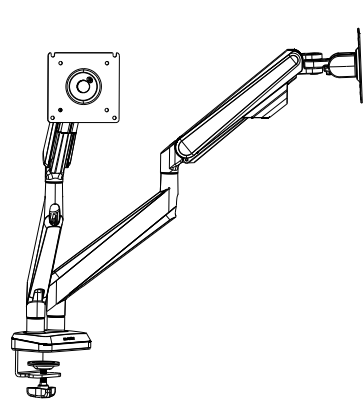
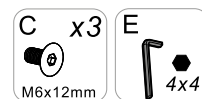
1. Desk clamp (1PC)
2. Anti-slip mat (1PC)
3. Anti-slip ring (1PC)
4. Grommet support (1PC)
5. Screw (1PC)
6. EVA anti-slip pad (1PC)
7. Grommet support-washer (1PC)
8. Butterfly nut (1PC)

Tool required

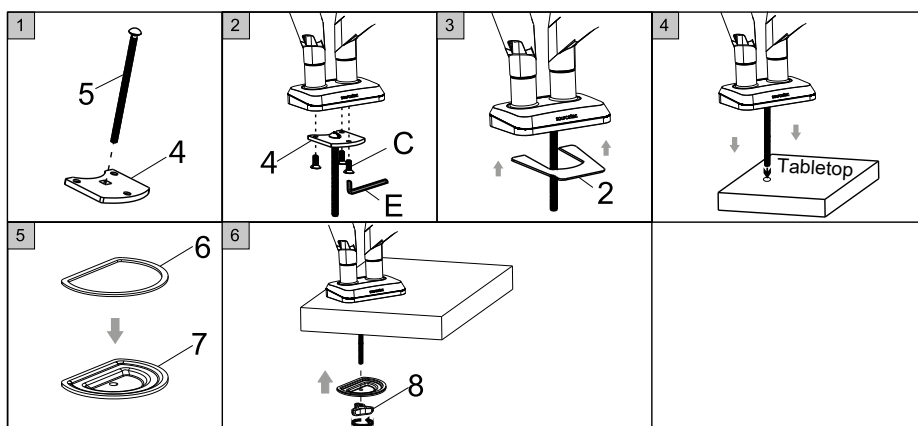
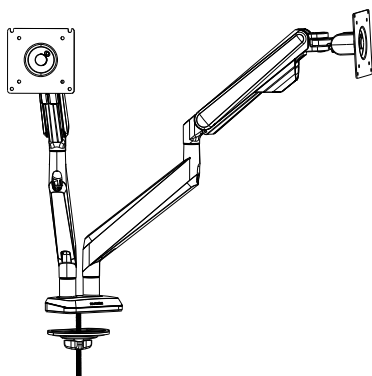
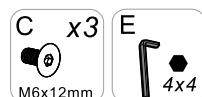
<b>A</b> x8 M4x12mm	<b>B</b> x8 M5x12mm	<b>C</b> x3 M6x12mm
<b>D</b> x16	<b>E</b> 4x4	<b>F</b> 5x5



## Desk clamp



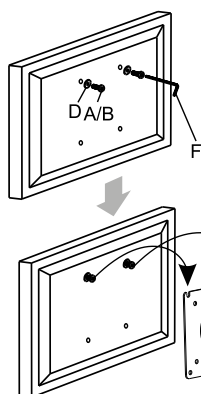
## Through desk mounting



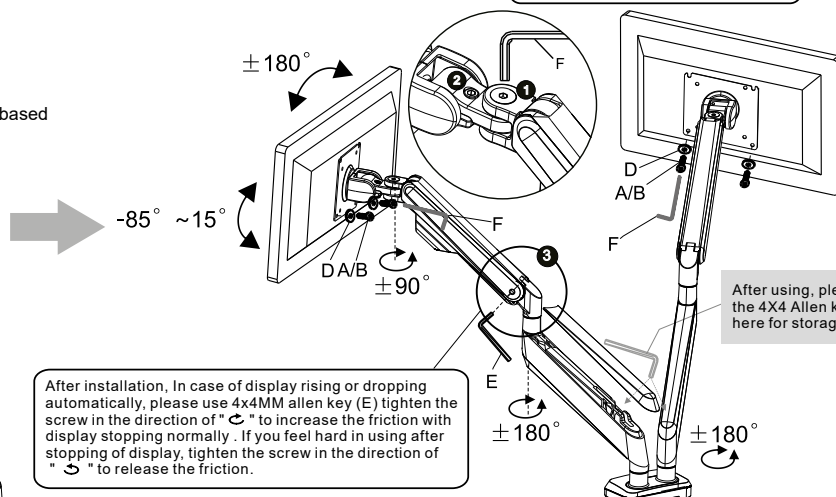
## Attaching monitor



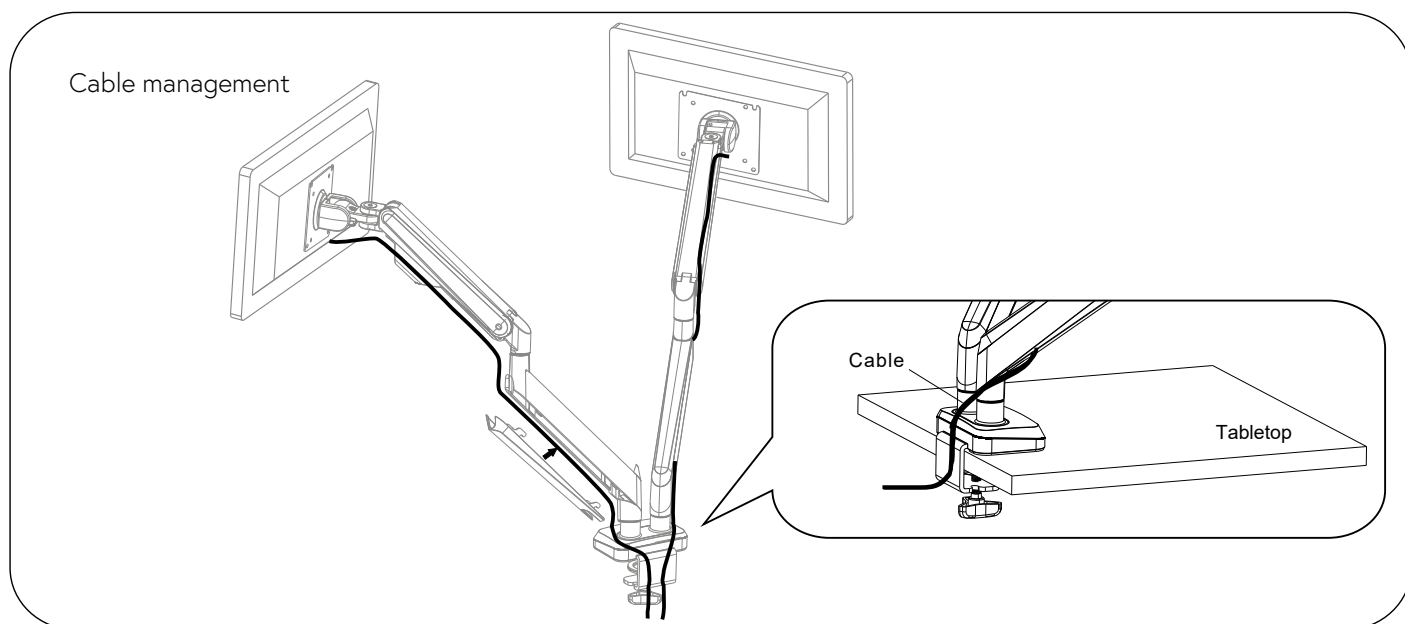
To adjust the swivel function use 5x5 allen key(F) on position 1  
To adjust the tilt function use 5x5 allen key(F) on position 2



Choose use washer(D) based on actual situation



After installation, In case of display rising or dropping automatically, please use 4x4MM allen key (E) tighten the screw in the direction of "↻" to increase the friction with display stopping normally. If you feel hard in using after stopping of display, tighten the screw in the direction of "↻" to release the friction.



## Safety

This product contains small items that could be a choking hazard if swallowed. Keep these items away from young children.

- Make sure these instructions are read and completely understood before attempting installation. If you are unsure of any part of this installation, please contact a professional installer for assistance.
- The desk or mounting surface must be capable of supporting the combined weight of the mount and the display, otherwise the structure must be reinforced.
- Please check joint parts every two months, making sure the screws are loosened or not.

This product was designed to be installed on desk. Before installing, make sure the mount will support the combined load of the equipment and hardware. Never exceed the maximum load capacity 9KG, or else it may result in product failure or personal injury.

**Note:** this product is intended for indoor use only. Use of this product outdoors could lead to product failure or personal injury.



This marking indicates that this product should not be disposed with other household wastes. To prevent possible harm to the environment or human health from uncontrolled waste disposal, recycle it responsibly to promote the sustainable reuse of material resources. To return your used device, please use the return and collection systems or contact the retailer where the product was purchased. They can take this product for environmental safe recycling.

# sourceteC

sourceteC:global