

# FINO

## PRODUCT CARD

### SHOWROOM

—  
Parchment House  
13 Northburgh Street  
London EC1V 0JP

### CONTACT

—  
[info@workstories.com](mailto:info@workstories.com)  
+44 (0)20 3735 5224  
[workstories.com](http://workstories.com)



MADE IN  
THE UK



**atelier**

# Flo

Designed by **ATELIER**

Flo's beauty is in its simplicity.  
Deep seated, low level modular units, complimented by a selection of low and high  
poufs with optional table tops, will help you create infinite seating landscapes...



DESCRIPTION

**Features:**

- Oval and round table tops available for poufs
  - Linking brackets available
  - Optional power module

# Dimensions

Flo	Width	Depth	Seat Height	Back Height
1-Seater sofa	840	840	485	775
Corner sofa	840	840	485	775
Square pouf	840	840	485	-
Half pouf	840	420	485	-
Tall half pouf	840	420	775	-

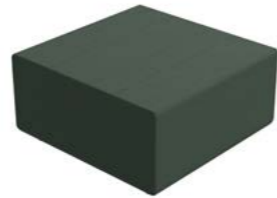
# Modularity



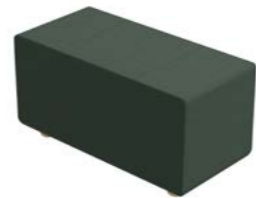
1-Seater sofa



Corner sofa



Square pouf



Half pouf



Tall half pouf

DIMENSIONS & MODULARITY

# Finishes

**Upholstery** – Any fabric of your choice, please refer to our Price List for options  
**Base** – Wooden feet

# Materials

**Seat** – CMHR Polyurethane Foam

Flo



FINISHES

Warranty

Workstories Ltd offers a 5-year warranty on our Atelier range.

This applies only if products have been used within and by standard office conditions. Wear and tear must be expected from normal use and are not covered by the warranty. Manufacturer's warranty applies to all fabrics.

General Care

CLEANING & CARE

The furniture should be regularly cleaned with a soft, dry cloth. If required, a damp, soft cloth may be used. Do not use abrasive, ammonia, bleach, spirit or oil-based cleaners, including D10 sanitiser. Periodically check and tighten hardware as necessary.

UPHOLSTERY

Upholstered furniture gets dusty and this can dull the colours and reduce the life of fabrics. Lightly vacuum or brush regularly but never use a stiff brush as this could damage the fibres. If you spill something on the upholstery, wipe excess liquid up immediately with a clean absorbent cloth. Then follow the fabric manufacturers cleaning instructions.

Environmental Practices

Workstories is dedicated to being environmentally conscious. We strive to ensure the continued availability of natural resources for current and future generations, and as part of our mission, we recognise the responsibility to protect human health and the environment, and to continually improve our operations.

To carry out this commitment, it is our policy to ensure all our factories:

Meet or exceed the requirements of all environmental laws and regulations applicable to our operations.

Limit our impact on the environment to the extent practicable and work to reduce recognised environmental risks to our employees and the communities in which we operate by employing safe technologies and operating procedures.

Continually assess our environmental programs and monitor our environmental performance.

Have operating policies and programs in place to implement our Environmental Quality Policy.



Last updated: 14/08/2023

*workstories...*

[workstories.com](https://workstories.com)